

Our Company – An Introduction

Panasonic

Panasonic Electric Works in Europe

CONTENTS

| | |
|---|-----------|
| Basic Business Principles | 4 |
| Global Activities | 5 |
| Panasonic Electric Works in Europe | 6 |
| Company History | 8 |
| Technical Excellence | 10 |
| Quality and Support Excellence | 11 |
| Target Markets | 12 |
| Panasonic eco ideas | 14 |

INTRODUCTION

The Panasonic Electric Works (PEW) group works actively toward the creation of new products and new businesses to enhance the quality of life throughout the world.

The Group operates in six business sectors: Lighting Products, Information Equipment and Wiring Products, Home Appliances, Building Products, Electronic and Plastic Materials and Automation Control Products. These products are used in houses, buildings, commercial and public facilities as well as in factories to support communications, industry and everyday living and working activities.

The Group core business activities focus on creating living spaces that enable people everywhere to enjoy more convenient, safer and more comfortable lives, with peace of mind, and on offering eco-friendly solutions that ensure coexistence with the global environment.

In 2018, PEW will celebrate Panasonic's 100th anniversary. In preparing for this momentous occasion, Panasonic aims to become the Number 1 Green Innovation Company in the Electronics Industry.



BASIC BUSINESS PRINCIPLES

The key to our success

Whenever we envision the future in these times of tumultuous change that defines our operating environment today, Panasonic Electric Works draws its inspiration from the Basic Management Objective set out by Konosuke Matsushita some 90 years ago.

The Basic Management Objective constitutes the Company's management philosophy as well as spells out our mission.

Furthermore, the Seven Principles, which are based on this management philosophy, serve as action guidelines for the day-to-day activities of employees.

Basic Management Objective

Recognizing our responsibilities as industrialists, we will devote ourselves to the progress and development of society and the well-being of people through our business activities, thereby enhancing the quality of life throughout the world.

Company Creed

Progress and development can be realized only through the combined effort and cooperation of each employee of our company. United in spirit, we pledge to perform our corporate duties with dedication, diligence, and integrity.

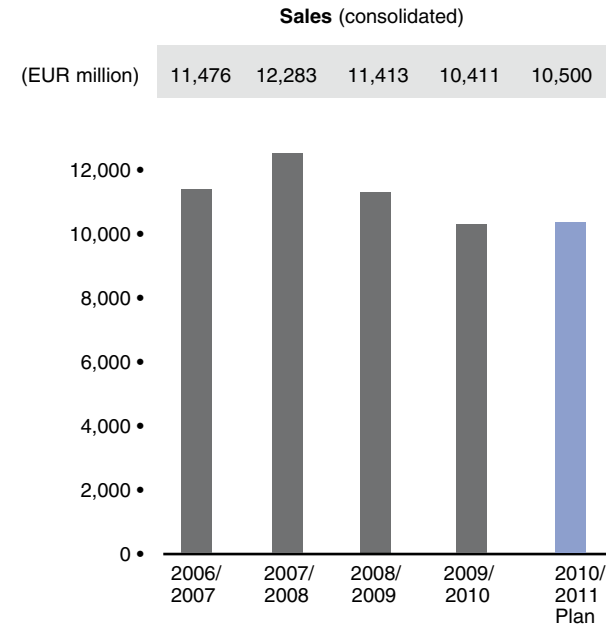
Business Principles

- Contribution to Society
- Fairness and Honesty
- Cooperation and Team Spirit
- Untiring Effort for Improvement
- Courtesy and Humility
- Adaptability
- Gratitude

GLOBAL ACTIVITIES

Panasonic Electric Works Co., Ltd. (PEW) traces its roots to the company founded in 1918 by Konosuke Matsushita. He was ahead of his time in recognizing that, by combining a spirit of innovation with a willingness to talk to customers, it was possible to create products with impressive user benefits. In 1935, the forerunner of the PEW group was established to carry on the work of the initial wiring products business. Sharing the same roots as PEW is Panasonic Corporation, well-known for its consumer products.

Konosuke Matsushita laid the foundation for a company that is now one of the largest in the world. In its 90 years of existence, Panasonic has developed some 220,000 products, ranging from high-quality lighting and information systems to consumer goods and household appliances to precision components and systems for industrial automation.



Panasonic Electric Works



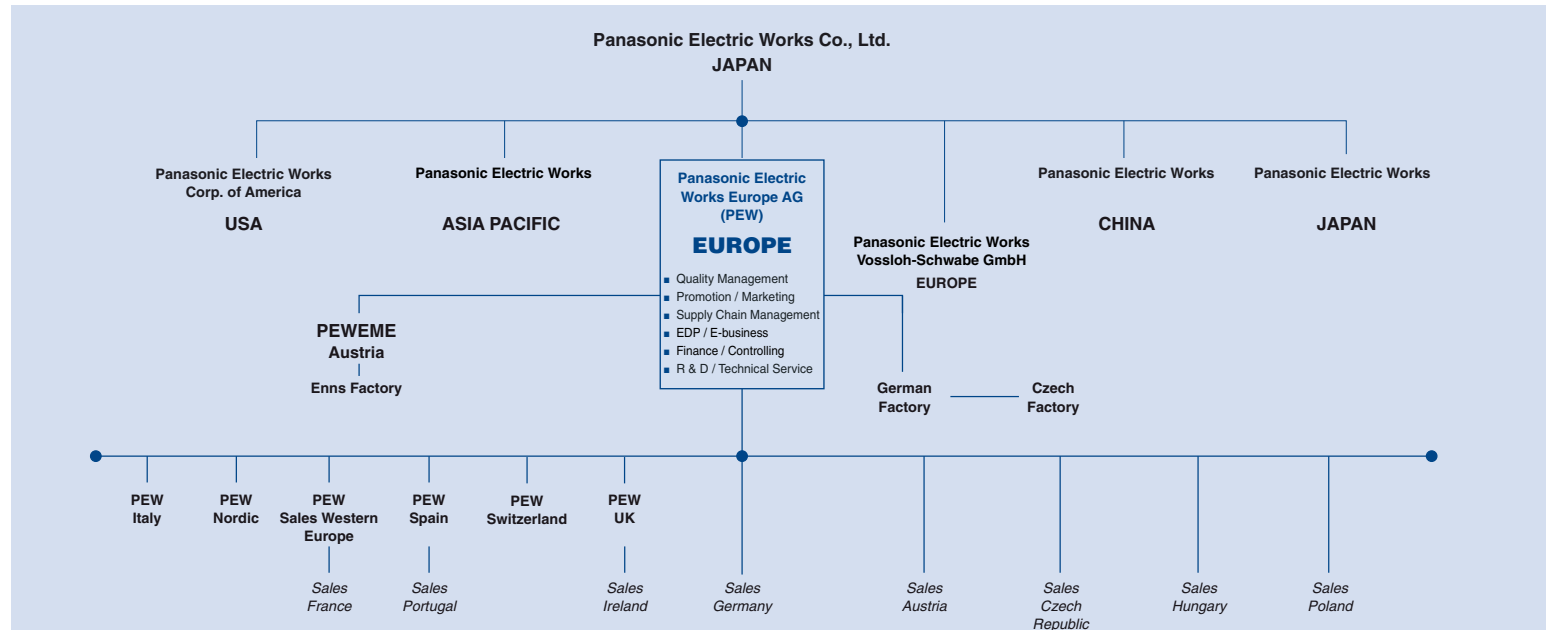
PANASONIC ELECTRIC WORKS IN EUROPE

Panasonic Electric Works Europe AG is the headquarters for the sales companies in a large number of European countries. Through the cooperation of these and other established partner companies, we can offer comprehensive service throughout Europe.

Our sales companies are organized on a local basis so that they reflect national characteristics and take into account the economic conditions specific to each country. Within a framework where tasks are shared with the local PEWs, PEW Europe AG is responsible for planning, development, technical service, central

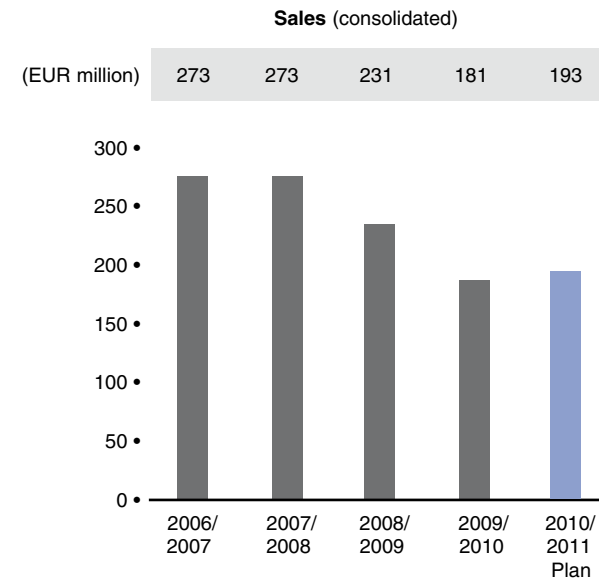
marketing, material management, controlling and world-wide coordination.

The central European warehouse and production facilities in Pfaffenhofen (D), Plana (CZ) and Enns (A) also fall under PEW Europe AG's administrative umbrella.

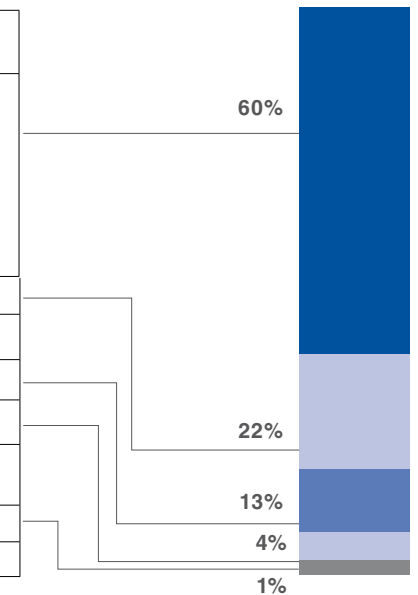


Panasonic Electric Works (PEW) in Europe started its activities more than 40 years ago by developing, in cooperation with its European customers, new generations of electromechanical relays which successfully contributed to more efficient and economical devices. Meanwhile, our European organization is involved in the sales, production and development of products from all divisions of the parent company PEW in Japan.

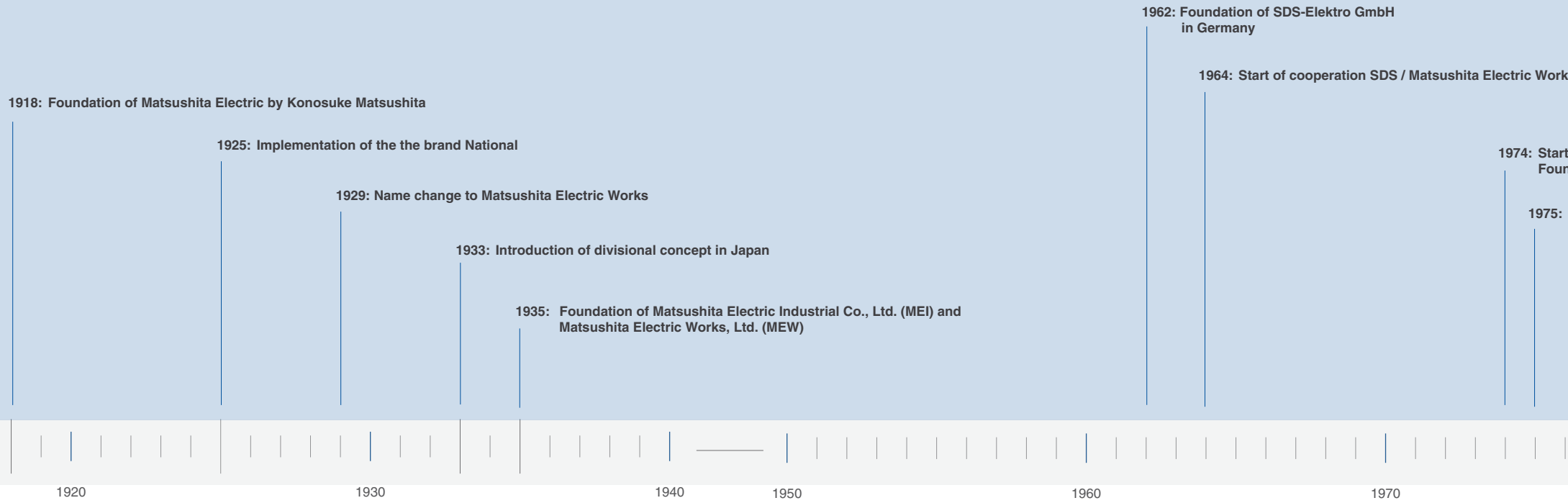
By consolidating the German subsidiary and PEW Europe AG in April 2010, customer service could be expanded further and market-oriented knowhow directly integrated into daily processes. Given these new conditions, Panasonic sees itself strengthened and well positioned to deal with the challenges the European market holds for the future.



| Switching Devices | Electromechanical Devices | Connectors | Automation Systems | Automation Control Devices |
|---|--|---|---|--|
| <ul style="list-style-type: none"> ● Signal relays ● Power relays ● Automotive relays ● Safety relays ● PhotoMOS relays ● Solid State relays ● High frequency relays ● Built-In sensors | <ul style="list-style-type: none"> ● Switches | <ul style="list-style-type: none"> ● Narrow pitch connectors ● I/O connectors | <ul style="list-style-type: none"> ● Laser markers ● Vision systems | <ul style="list-style-type: none"> ● FA components ● Sensors ● PLCs ● Inverters ● Servo drives ● HMIs ● UV curing systems |
| Home Appliances | | | | |
| <ul style="list-style-type: none"> ● Health care products | <ul style="list-style-type: none"> ● Beauty care products | <ul style="list-style-type: none"> ● Electric power tools | | |
| Laminates | | | | |
| Information Equipment & Wiring | | | | |
| <ul style="list-style-type: none"> ● Fire alarm systems ● Smoke alarm systems | <ul style="list-style-type: none"> ● Switch gears | <ul style="list-style-type: none"> ● 3D cameras | | |
| Lighting | | | | |
| <ul style="list-style-type: none"> ● Lighting maintenance systems | | | | |



COMPANY HISTORY

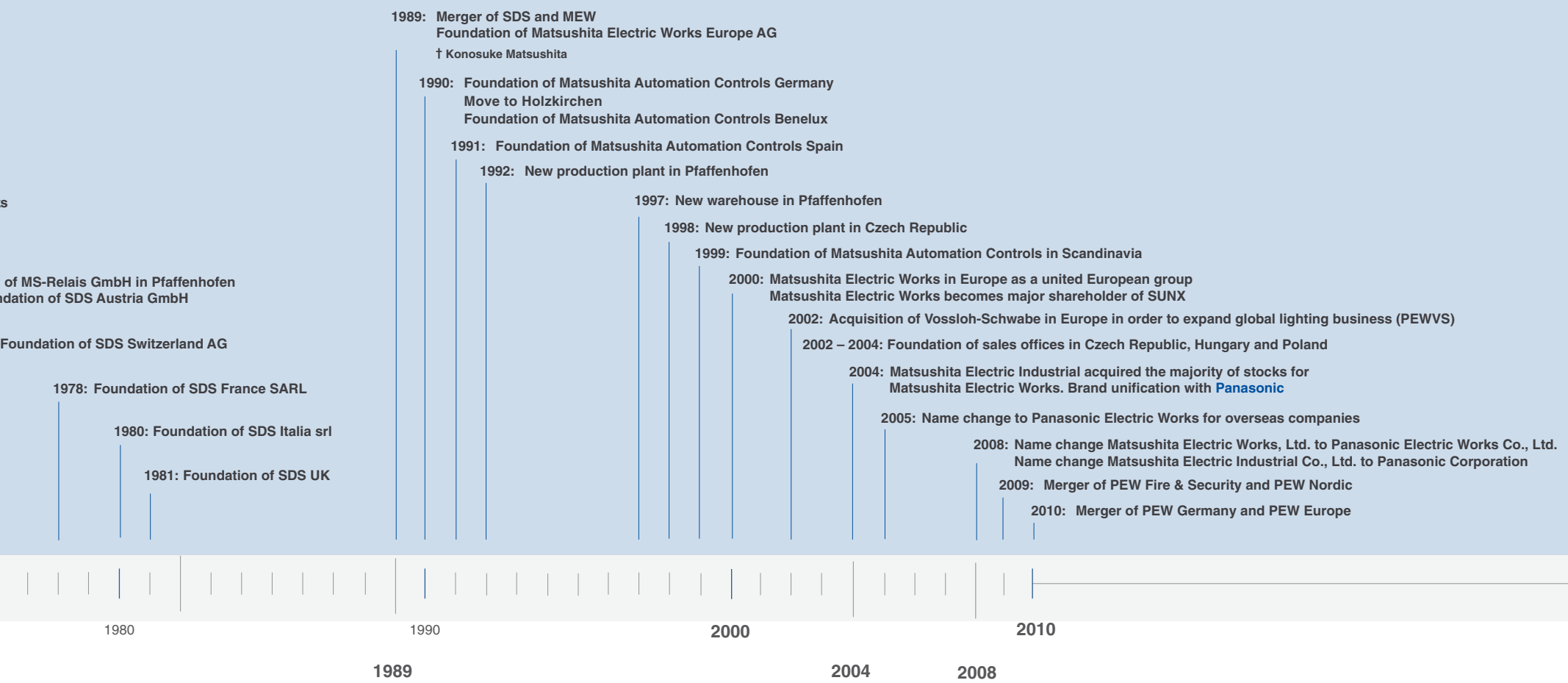


1918



Konosuke Matsushita







TECHNICAL EXCELLENCE

The Panasonic Group is a global force. With our local facilities and branched around the world, manufacturing know-how gained from decades of experience and a team of premium process engineers, our customers can depend on excellent products and outstanding customer support.

The research teams use a global network of Panasonic research centers and premier research institutions to explore and forge new technologies. Necessarily, the equipment employed by our research centers is state-of-the-art. Our goal is to expand the customers' future applications. Especially in the field of applications technology, our customers play a key role during development.

Typical examples are MEMS (Micro Electrical Mechanical Systems), MIPTEC (Microscopic Integrated Processing) and nano technology all of which accelerate the micro-miniaturization of devices.



EXCELLENCE IN QUALITY AND SUPPORT

Cost-oriented manufacturing and cooperation with qualified suppliers allow us to consistently offer quality products that are tailored to customer requirements at competitive prices.

Our customers benefit from high flexibility thanks to local production and a central warehouse located in Germany. Our state-of-the-art distribution center gives us a better overview of what we have in stock and how fast products move, which allows us to eliminate unnecessary stock and keep our costs down. Logistically, we can ship to customers directly, anywhere in Europe.

Customer satisfaction and trust are at the core of Panasonic *Quality First* activities. To ensure top quality products and services, everybody is involved, from top management to each individual employee. From product quality to management quality, we concern ourselves with how to respond to a diversity of customer needs and expectations. Thanks to local management, our customers can count on quick and competent pre- and after-sales service.



TARGET MARKETS

Industrial Automation



Factory Automation

Safety systems
Visual quality inspection
Track and trace application

Machinery

Food and packaging
Semiconductor Pick & Place
Glass marking

Robotics

Motion control and control systems

Automotive



Car Applications

Power train
Comfort electronic
Safety & security
Eco drive (Hybrid / Electric)

Infrastructure

Tollgate control
Traffic-control systems

Automobile production

Visual quality inspection
Track and trace applications
Pick-to-Light systems

Building Automation



Home & Building Automation

Door control systems
Escalators & elevators
Energy consumption control
Smart metering

Lighting

Light control
Motion control
Street light control

Safety & security systems

Fire alarms
Smoke alarms
Burglar alarms

Green Automation



Energy management

Energy distribution (gas, power)
Smart grid applications
Telecontrol systems

Green energy

Solar tracker equipment
Inverters

Water/Waste water

Water supply
Waste water
Data transfer

Transportation



Railway
Signaling
Level crossing protection
Actuating systems
Door control
Passenger counting
Ticket machines

Home Appliances



Home entertainment
TV switch

White goods
Function control
Energy control
Pressure control

Information & Telecommunication



IT devices
Mobile device connections
Energy control

Network equipment
GPS timing
Cross connect

Measurement



Measurement equipment
High frequency switch
Distance measurement
Pressure measurement

Test devices
Signal switch

Test equipment
PC board test



MAKE YOUR FUTURE GREEN

Panasonic Environmental Statement:

“Fully aware that humankind has a responsibility to respect and preserve the delicate balance of nature, we at Panasonic acknowledge our obligation to maintain and nurture the ecology of this planet. Accordingly, we pledge ourselves to the prudent, sustainable use of the earth’s resources and the protection of the natural environment, while we strive to fulfill our corporate mission of contributing to enhanced prosperity for all.”





The Panasonic Group has announced an “eco ideas” strategy and joined forces worldwide to achieve environmental goals such as: reducing CO₂ emissions, handling chemicals safely, cutting waste, and recycling materials and resources. This strategy aims to accelerate efforts to ensure coexistence with the global environment and is based on three concepts.

eco ideas for Products

We will continue to develop energy-saving and Green Products (GP) and promote their acceptance in the global market.

eco ideas for Manufacturing

We are pushing ahead with efforts to achieve the Panasonic Group’s goal of reducing CO₂ emissions and waste at all of our manufacturing sites.

eco ideas for Everybody, Everywhere

We are working to raise environmental awareness inside and outside the Company by furthering environmental education and learning.

As a consequence, Panasonic not only achieved but exceeded its eco ideas targets by 24% set for the period October 2008 through March 2010 for its European manufacturing sites. Since October 2008, 20 of our product categories were awarded Panasonic’s top class environmental performance status Superior Green Product. Panasonic Europe has initiated more than 40 eco-related activities, in which more than 3,000 Panasonic employees participated.

North America

Europe

Asia Pacific

China

Japan

Panasonic Electric Works

Please contact our Global Sales Companies in:

Europe

| | | |
|-------------------------|---|---|
| Headquarters | Panasonic Electric Works Europe AG | Rudolf-Diesel-Ring 2, 83607 Holzkirchen, Tel. +49 (0) 8024 648-0, Fax +49 (0) 8024 648-111, www.panasonic-electric-works.com |
| Austria | Panasonic Electric Works Austria GmbH | Josef Madersperger Str. 2, 2362 Biedermansdorf, Tel. +43 (0) 2236-26846, Fax +43 (0) 2236-46133 www.panasonic-electric-works.at |
| | PEW Electronic Materials Europe GmbH | Enshafenstraße 30, 4470 Enns, Tel. +43 (0) 7223 883, Fax +43 (0) 7223 88333, www.panasonic-electronic-materials.com |
| Benelux | Panasonic Electric Works Sales Western Europe B.V. | De Rijn 4, (Postbus 211), 5684 PJ Best, (5680 AE Best), Netherlands, Tel. +31 (0) 499 372727, Fax +31 (0) 499 372185, www.panasonic-electric-works.nl |
| Czech Republic | Panasonic Electric Works Czech s.r.o. | Průmyslová 1, 34815 Planá, Tel. (+420)-374 799 990, Fax (+420)-374 799 999, www.panasonic-electric-works.cz |
| France | Panasonic Electric Works Sales Western Europe B.V. | Succursale française, 10, rue des petits ruisseaux, 91370 Verrières Le Buisson, Tél. +33 (0) 1 6013 5757, Fax +33 (0) 1 6013 5758, www.panasonic-electric-works.fr |
| Germany | Panasonic Electric Works Europe AG | Rudolf-Diesel-Ring 2, 83607 Holzkirchen, Tel. +49 (0) 8024 648-0, Fax +49 (0) 8024 648-111, www.panasonic-electric-works.de |
| Hungary | Panasonic Electric Works Europe AG | Erdőalja út 91/a, 1037 Budapest, Neumann János u. 1., Tel. +36 (0) 20 9715688, www.panasonic-electric-works.hu |
| Ireland | Panasonic Electric Works UK Ltd. | Irish Branch Office, Dublin, Tel. +353 (0) 14600969, Fax +353 (0) 14601131, www.panasonic-electric-works.co.uk |
| Italy | Panasonic Electric Works Italia srl | Via del Commercio 3-5 (Z.I. Fertina), 37012 Bussolengo (VR), Tel. +39 (0) 456752711, Fax +39 (0) 456700444, www.panasonic-electric-works.it |
| Nordic Countries | Panasonic Electric Works Nordic AB | Sjöängsvägen 10, 19272 Sollentuna, Sweden, Tel. +46 859476680, Fax +46 859476690, www.panasonic-electric-works.se |
| | | Jungmansgatan 12, 21119 Malmö, Tel. +46 40 697 7000, Fax +46 40 697 7099, www.panasonic-fire-security.com |
| Poland | Panasonic Electric Works Polska sp. z o.o. | ul. Woloska 9A, 02-583 Warszawa, Tel. +48 (0) 22 338-11-33, Fax +48 (0) 22 338-12-00, www.panasonic-electric-works.pl |
| Portugal | Panasonic Electric Works España S.A. | Portuguese Branch Office, Avda Adelino Amaro da Costa 728 R/C J, 2750-277 Cascais, Tel. +351 214812520, Fax +351 214812529 |
| Spain | Panasonic Electric Works España S.A. | Barajas Park, San Severo 20, 28042 Madrid, Tel. +34 913293875, Fax +34 913292976, www.panasonic-electric-works.es |
| Switzerland | Panasonic Electric Works Schweiz AG | Grundstrasse 8, 6343 Rotkreuz, Tel. +41 (0) 41 7997050, Fax +41 (0) 41 7997055, www.panasonic-electric-works.ch |
| United Kingdom | Panasonic Electric Works UK Ltd. | Sunrise Parkway, Linfood Wood, Milton Keynes, MK14 6LF, Tel. +44 (0) 1908 231555, Fax +44 (0) 1908 231599, www.panasonic-electric-works.co.uk |

North & South America

| | | |
|------------|-----------------------------------|---|
| USA | PEW Corporation of America | 629 Central Avenue, New Providence, N.J. 07974, Tel. 1-908-464-3550, Fax 1-908-464-8513, www.pewa.panasonic.com |
|------------|-----------------------------------|---|

Asia Pacific/China/Japan

| | | |
|------------------|--|--|
| China | Panasonic Electric Works (China) Co., Ltd. | Level 2, Tower W3, The Towers Oriental Plaza, No. 2, East Chang An Ave., Dong Cheng District, Beijing 100738, Tel. (010) 8518-5988, Fax (010) 8518-1297 |
| Hong Kong | Panasonic Electric Works (Hong Kong) Co., Ltd. | RM1205-9, 12/F, Tower 2, The Gateway, 25 Canton Road, Tsimshatsui, Kowloon, Hong Kong, Tel. (0852) 2956-3118, Fax (0852) 2956-0398 |
| Japan | Panasonic Electric Works Co., Ltd. | 1048 Kadoma, Kadoma-shi, Osaka 571-8686, Japan, Tel. (06) 6908-1050, Fax (06) 6908-5781, http://panasonic-electric-works.net |
| Singapore | Panasonic Electric Works Asia Pacific Pte. Ltd. | 101 Thomson Road, #25-03/05, United Square, Singapore 307591, Tel. (06255) 5473, Fax (06253) 5689 |